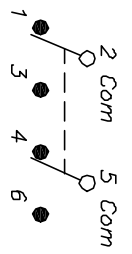


RECOMMENDED P.C.B. LAYOUT

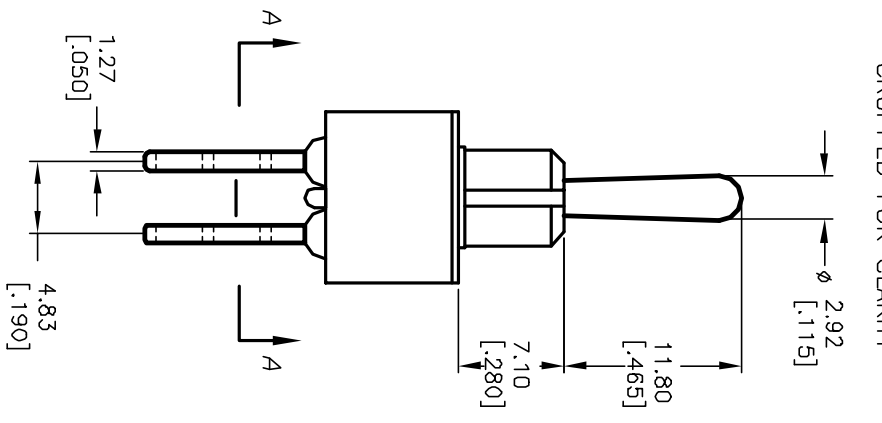
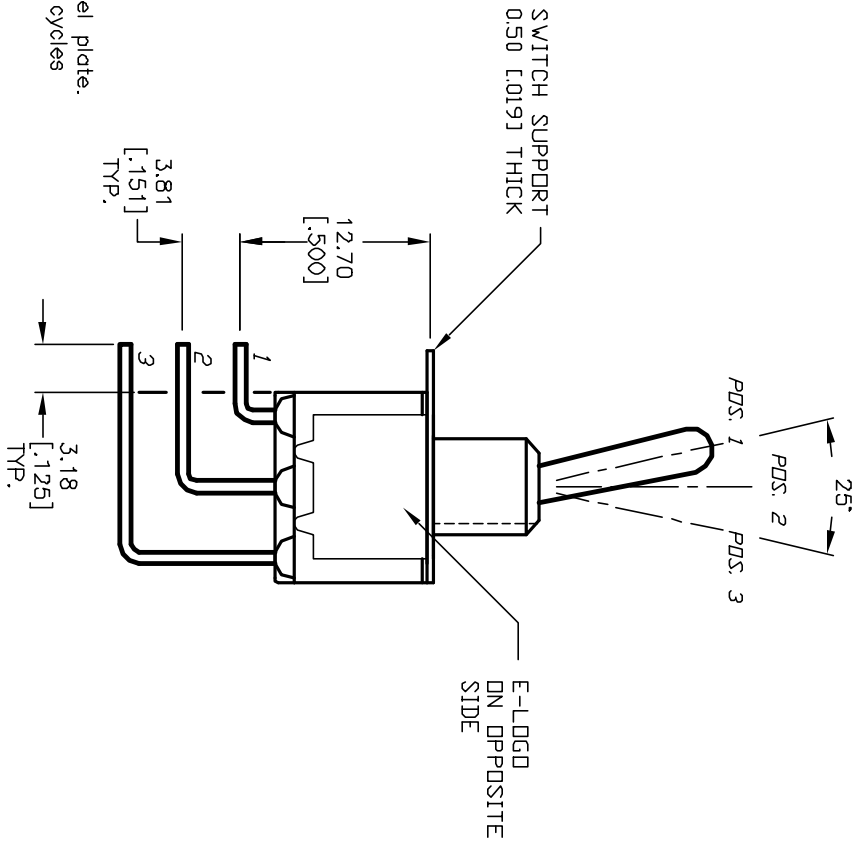


CIRCUIT: DPDT CONTACT CONFIGURATION

SWITCH FUNCTION		
PDS. 1	PDS. 2	PDS. 3
DN	NDNE	DN
2-3,5-6	DPEN	2-1,5-4

NOTES:

1. ALL DIMENSIONS IN MM [INCH]
2. GENERAL TOLERANCE: X.X=±0.4 X.XX=±0.25
3. TERM. NOS. FOR REF. ONLY
4. RATING: 0.4VA @20V AC/DC max.
5. FIXED TERM. & MOVING CONTACT:
Copper Alloy W/GOLD plate over Nickel plate.
6. ELECTRICAL LIFE: 50,000 make-and-break cycles at full load.
7. INSULATION RESISTANCE: 1,000M ohm min.
8. DIELECTRIC STRENGTH: 1,000V RMS @sea level.
9. OPERATING TEMP.: -30°C to +85°C.



E-SWITCH®

REV. B	12005	REVISED AND REDRAWN	3/20/02	CJB	TITLE	100 DP-1 T1 B4 M7 R E (GOLD CONTACTS)	SCALE	2:1	DATE	3/20/02	DR	CJB	DWG	T121001	REV	B
ECN No.		DESCRIPTION	DATE	CHKD												
<p>THE INFORMATION CONTAINED IN THIS DOCUMENT IS PRELIMINARY. THIS SWITCH AND IS NOT TO BE COPIED OR TRANSFERRED</p>																